



ALASKA DIVISION OF HOMELAND SECURITY & EMERGENCY MANAGEMENT



SITUATION REPORT 23-250 • September 07, 2023

Toll-Free 1.800.478.2337

Anchorage Area 907.428.7000

SEOC 907.428.7100

SEOC Preparedness Level Level 1 - Routine Operations	http://ready.alaska.gov	National Terrorism Advisory System: Read the NTAS Bulletin here
Maritime Security (MARSEC) Level:1- Minimum Appropriate Security Measures	WHO Novel Coronavirus Pandemic (COVID-19): 2019 Novel Coronavirus	Alaska Military Installation Force Protection Level: FPCON Bravo

(Significant changes from previous situation reports are red.)

Significant Issues:

2023 Spring Flood Recovery

This week joint teams from State Disaster Assistance and FEMA will be traveling to the communities of Russian Mission, Crooked Creek, Circle and Fort Yukon to complete federal individual assistance applications and Small Business Administration (SBA) applications for residents impacted from this year's spring flood disaster.

Juneau Suicide Basin Flooding:

State disaster Individual Assistance registration continues to be available through telephone and web site. The deadline to apply is October 9,2023.

Web Site for IA Registration for the Juneau disaster is: <https://ready.alaska.gov/Recovery/IA>

IA Hotline: 1-(844)-445-7131.

State of Alaska Department of Health (DOH)

The DOH stands ready to assist with all aspects of public health and in the event of a public health emergency, supported by the SEOC and other state departments as required. For current information, see: <https://health.alaska.gov/dph/Pages/default.aspx> <https://health.alaska.gov/dph/Emergency/Pages/prepared/default.aspx>

NTAS Bulletin

The U.S. Department of Homeland Security has issued an updated National Terrorism Advisory Bulletin. The updated bulletin can be viewed at the below link.

To read current or expired advisories, click the link below: <https://www.dhs.gov/national-terrorism-advisory-system>

Travel Alerts and Conditions

Be aware that **Taylor Creek Bridge**, on the Taylor Highway, approximately 10-miles South of Chicken, will be closed to all traffic and pedestrians beginning Wednesday 9/20 through Sunday 9/24 at 3:00 PM. Please plan accordingly.

For current driving conditions dial 511 or link to <https://511.alaska.gov/>

Barry Arm Landslide / Tsunami Risk

For the latest information on the Barry Arm Landslide and Tsunami risk, click here:

<https://dggs.alaska.gov/hazards/barry-arm-landslide.html>

Recent Earthquakes

USGS Earthquake Information: <http://earthquake.usgs.gov/>

National Tsunami Warning Center: <http://tsunami.gov/>

Alaska Volcanoes

Great Sitkin Alert Level: **Watch** and Aviation Color Code: **Orange**

Shishaldin Alert Level: **Watch** and Aviation Color Code: **Orange**

Trident Alert Level: **Advisory** and Aviation Color Code: **Yellow**

For Alaska Volcano updates, go to: <https://www.avo.alaska.edu/>

Air Quality Index (AQI) Advisories

No current alerts.

For the most up to date Air Quality Index Advisories: <http://dec.alaska.gov/Applications/Air/airtoolsweb/Home/Index>

Spills of Oil and Hazardous Substances

The ADEC Spill Prevention and Response page is located at:

[http://dec.alaska.gov/spar/ppr/spill information/response/](http://dec.alaska.gov/spar/ppr/spill%20information/response/)

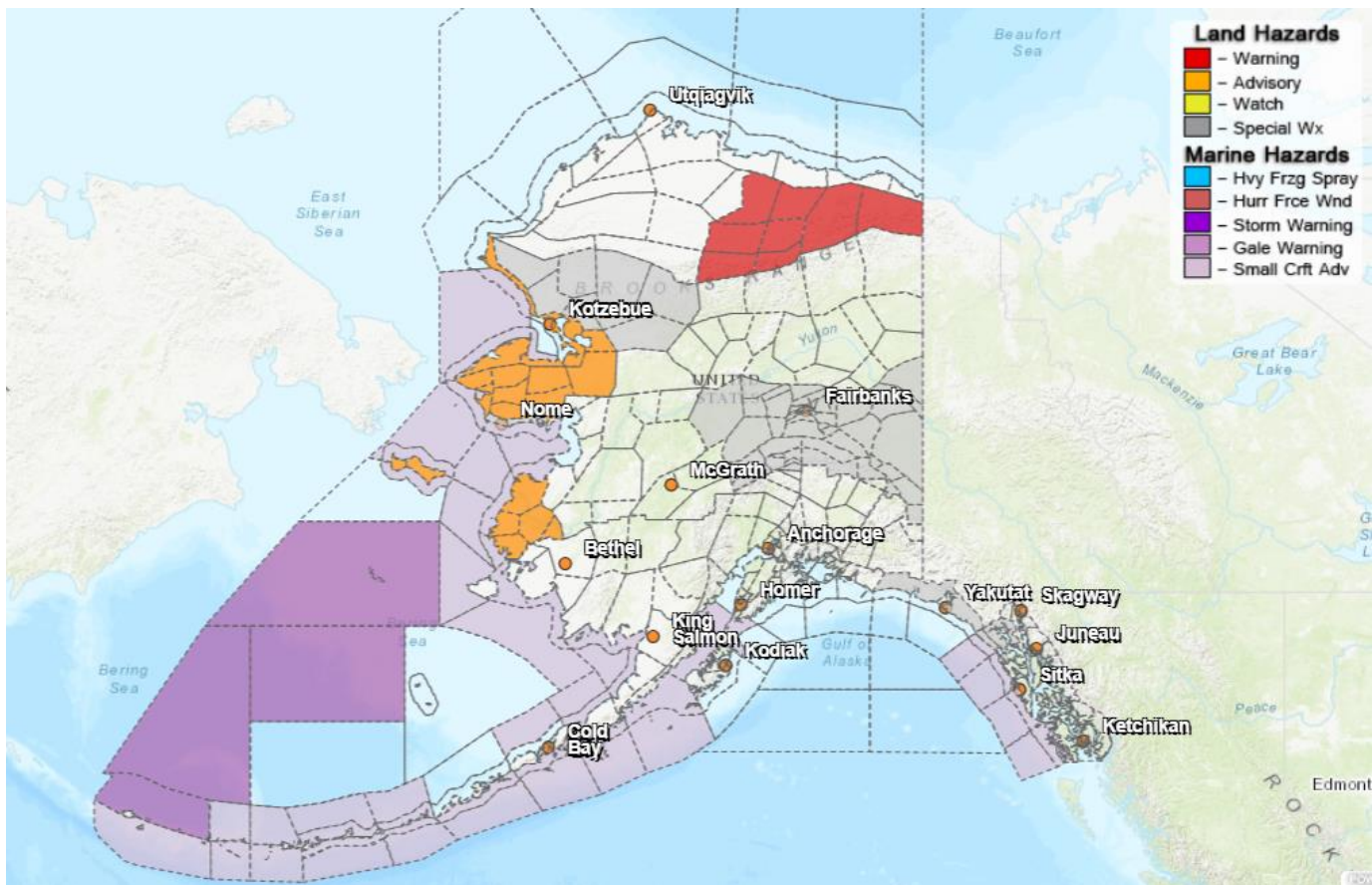
Alaska Cyber Security Information

State Employees may sign up for cyber security notifications and alerts at

<https://oit.alaska.gov/security>

CISA-Cybersecurity Services and Tools: www.cisa.gov/free-cybersecurity-services-and-tools

Significant Weather:



The following Warnings, Watches, and/or Advisories have been issued:

Winter storm warning in effect for the Northeastern Brooks Range until 4pm Thursday for snow accumulation up to 8 inches above 4,000ft.

High Surf Advisory:

- **Yukon delta** – in effect until 6am Friday.
- **St. Lawrence Island and Bering Strait Coast** – in effect until 6am Friday.
- **Northern and Interior Seward Peninsula until 6am Friday; Baldwin Peninsula and Selawik Valley** – in effect until 4pm Thursday.
- **Chukchi Sea Coast** – in effect until 6am Friday.

Special Weather Advisory:

- **Lower Kobuk and Noatak Valleys; Baldwin Peninsula and Selawik Valley; Northern and Interior Seward Peninsula; Southern Seward Peninsula Coast; Upper Kobuk and Noatak Valleys** – rising streams and rivers through this week.
- **Central Interior, Middle Tanana Valley, Deltana and Tanana Flats, and Fortymile country** – high water on the Tanana River continues this week.
- **Denali, and Eastern Alaska Range** – Snow accumulation up to 6 inches above 3000ft.
- **City and Borough of Yakutat, Glacier Bay, Cape Fairthweather to Lisianski Strait** – Heavy precipitation along the outer coast through the weekend.

For more information and the most current weather, go to: <http://www.weather.gov/arh>.

The Next Situation Report will be **September 8, 2023**. A significant change in the situation or the threat level will prompt an interim report. This report is posted on the internet at <https://ready.alaska.gov/sitrep>. To register for email distribution, go to <http://list.state.ak.us/mailman/listinfo/dhsem.situation.report>. Direct questions regarding this report to the SEOC at 907-428-7100 or seoc@alaska.gov